

Whose life is the hardest?

The vast majority of respondents believe that currently in Poland there are people or social groups that experience greater difficulties than others, have less opportunities to meet their needs.

In your opinion, are there currently people or social groups in Poland that experience more difficulties than others, have fewer opportunities to fulfil their life needs?

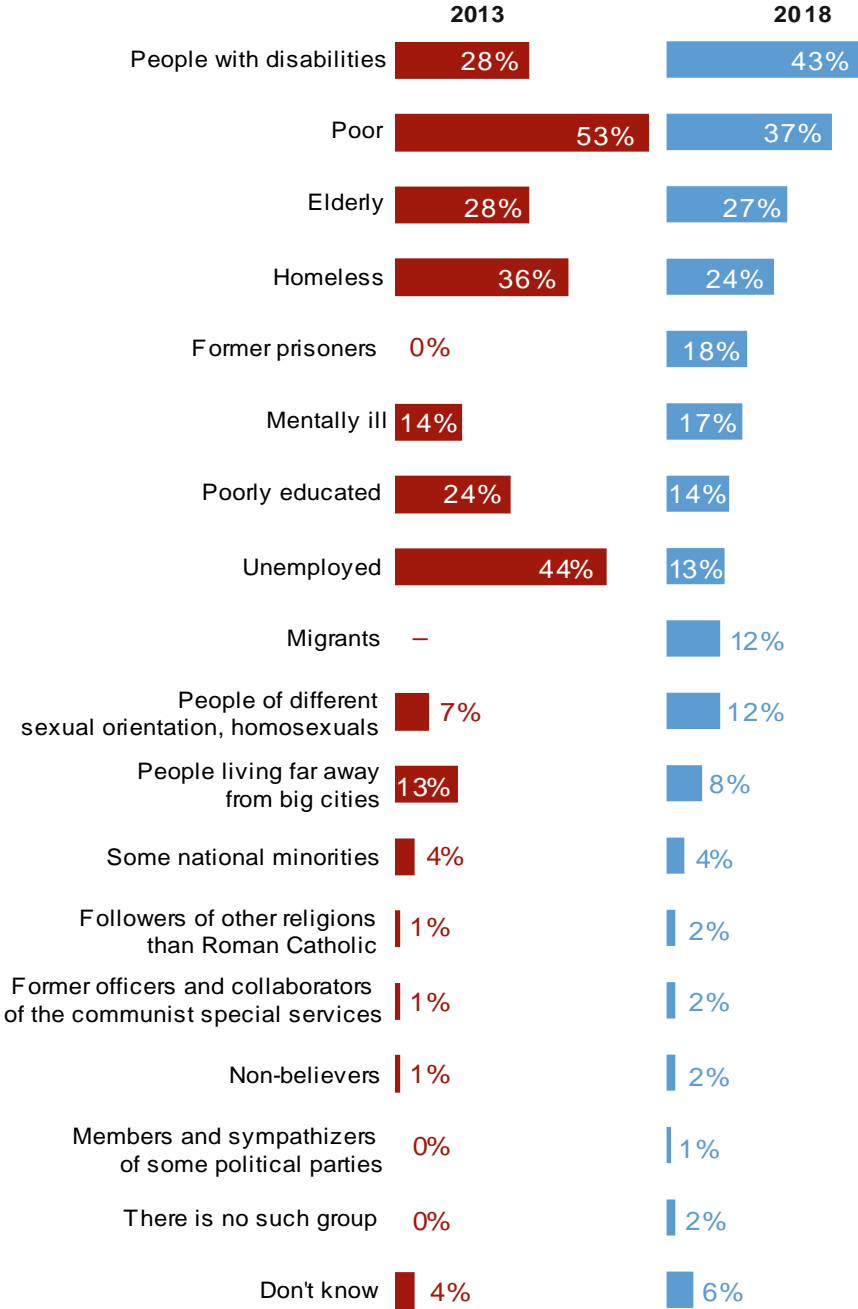


In public opinion, people with disabilities are in the worst situation, followed by the poor, seniors and homeless.

Over the last five years, there have been significant changes in the perception of the groups with most difficulties. In 2013, respondents believed that the greatest difficulties and limitations are faced by the poor, secondly by the unemployed, and thirdly by the homeless. Comparing this year's results with data from five years ago, comparability of answers is limited due to a change in the list of groups at risk of exclusion, i.e. the addition of the category of "migrants" this year. Nevertheless, changes in the perception of groups at risk of exclusion that have occurred over the past five years are very clear and symptomatic. The

significance of factors related more or less directly to the material situation, i.e. poverty, unemployment, homelessness, education, and living away from big cities, has declined. On the other hand, despite the extension of the list, there is an increased perception of risk for people with disabilities, people with a different sexual orientation and the mentally ill. Older people and some national minorities were mentioned with comparable frequency.

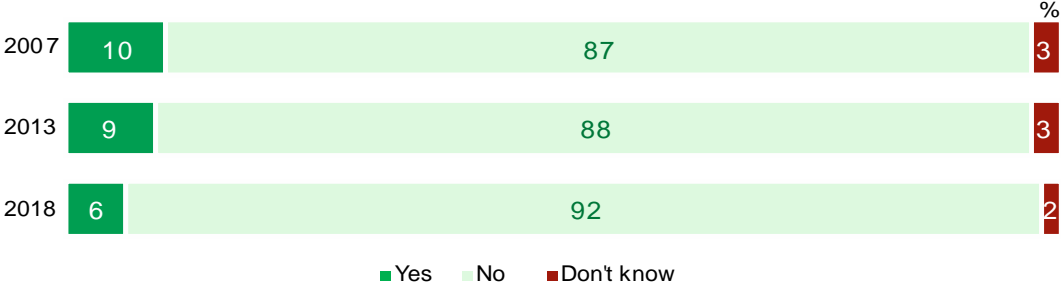
Which of the following groups are in the worst situation and face the greatest difficulties and limitations in society?



Up to 3 choices

Over the past five years, the percentage of respondents who feel worse treated, less accepted in society has fallen. Currently, 6% of adult Poles feel discriminated against.

Do you personally feel treated worse than others or less accepted in society?



The perceived lack of acceptance is most strongly related to the assessment of material living conditions: 29% of people dissatisfied with their standard of living feel discriminated against. In addition, elderly respondents and people with primary education feel worse treated than others. The sense of exclusion also corresponds with participation in religious practices: people who participate in religious service several times a week relatively frequently feel lack of acceptance in society (16%).

More information about this topic can be found in CBOS report in Polish: "Who Has the Hardest Life?", August 2018. Fieldwork for national sample: July 2018, N=952. The random address sample is representative for adult population of Poland.